

Tie One On Purse – Part 1

Supplies:

One Tie

- 1 fat quarter for lining
- 1/3 yard muslin for interfacing
- 1 to 1/14 yd cording or chain for handle
- 12" of 3/8" wide elastic
- ¼ yard decorative beading (for accenting)
- 1 decorative button (for accenting)

Straight pins

- Thread to match tie (we will topstitch)
- 1 prewound bobbin
- 2 small safety pins
- Seam ripper
- Paper and fabric scissors (or rotary cutter/mat)
- 6 x12 inch ruler
- 1/4 inch piecing foot
- Zipper foot
- Sewing machine in good working order

Cutting the tie -- From the tip of the wide end of the tie measure 6 inches and cut. DO NOT remove lining and interfacing.

You will need 6 equal pieces from the remaining portion of the tie. MEASURE before you cut as some ties are shorter than others. From the remainder of the tie, cut 6 pieces. If the total tie length remaining is 45 inches, cut them 7.5 inches each. If the remaining tie length measures 48 inches or longer, cut 8 inch lengths. NOTE: DO NOT include the small end tip as a piece.



Remove the thread and interfacing from these six pieces. With a hot iron (heat setting appropriate for the tie fabric) – remember silk does not need much heat — press all pieces flat. Iron seams toward outside.

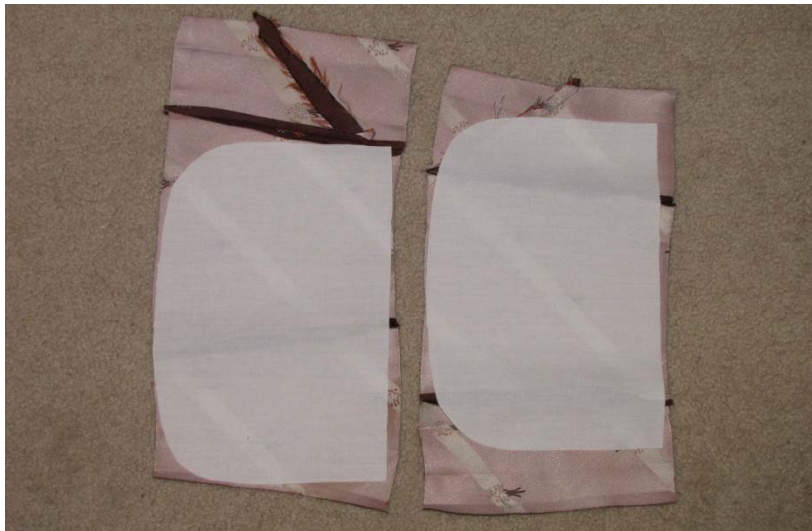


Divide the pieces so that there is one large piece for each front and back. Use two of the remaining pieces to add to each of the large pieces – sew one on each side of the large piece, right sides together. Use $\frac{1}{4}$ inch seams. This makes two distinct pieces – one for the front and one for the back.



Interfacing -- Adding $\frac{1}{4}$ " seam allowance, cut out the interfacing/lining pattern. Using the pattern, cut two pieces of interfacing from the muslin and two pieces of lining from the fat quarter.

Place one piece of muslin on the **WRONG** side of the tie material, move pattern piece to achieve design features you might want on your purse, or to eliminate features you don't want (such as to avoid seams). When desired position is achieved, pin muslin in place and sew around the outside $\frac{1}{4}$ inch. **DO NOT** worry about being exact. Imperfections will be hidden when finished. (see next figure)



Cut around sewn muslin – removing excess tie material. Clip corners. Reserve scraps until handle choice has been made. You might need these to make loops for your handle.



Pattern for:
Lining (cut 2)
muslin interfacing (cut 2)